

# THE SEEDS OF DREAMS



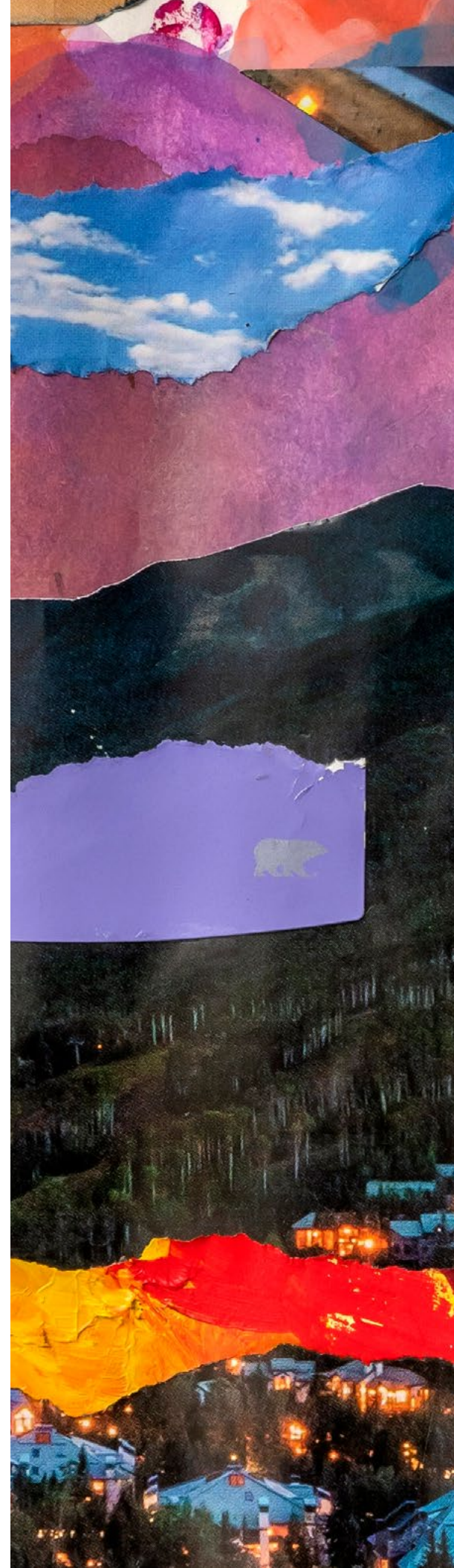
Exhibition Catalog by Stephanie Mercado

# THE SEEDS OF DREAMS

October 6 - November 26, 2023



Breck Create  
Old Masonic Hall  
136 S Main St  
Breckenridge, CO, 80424  
[breckcreate.org](http://breckcreate.org)



The Seeds of Dreams  
By Stephanie Mercado | Los Angeles

*The Seeds of Dreams* is a tribute to the vibrant Latine communities of Summit County, Colorado, shining a spotlight on the unwavering dedication and resilience of Latine workers quietly working behind the scenes to establish roots and harvest dreams. Through a series of portraits, this exhibition pays homage to individuals who contribute to the fabric of society, toiling in the food industry, maintenance, and nonprofit sectors, tirelessly advocating for workers' rights, and striving for a just, equitable, and inclusive world.

Within these artworks, Stephanie Mercado explores acts of care and the relentless pursuit of aspirations within a land that brims with choices, opportunities, and the promise of abundance. As a Fall 2022 artist-in-residence with Breck Create, Mercado immersed herself in the local environment. In *The Seeds of Dreams*, Mercado draws inspiration from the majestic natural landscapes, heartfelt interactions with community members, and the glossy real-estate magazines that line Main Street. Her exhibition takes viewers on a captivating exploration of the ecosystem of Summit County and celebrates the working-class communities that sustain its thriving economy.

October 6 - November 26, 2023  
Old Masonic Hall  
Breckenridge, CO.



Labor, and the fusion of time-honored traditions with innovative approaches, are central to Mercado's artistic expression. She weaves patterns from textiles rooted in Indigenous arts that reference history, Indigenous peoples, the complexity of identity, and manual labor throughout the exhibition's imagery. Employing a diverse range of mediums such as printmaking, painting, and illustration, she crafts a visually captivating narrative steeped in social practice and social justice. Through her artworks, Mercado invites viewers to contemplate the multifaceted layers of human experience, urging people to recognize the inherent value and dignity of all individuals who contribute to the tapestries of our society.

Mountain Dreamers and Breck Create collaborated on inviting select participants from the local workforce for this exhibition. Mountain Dreamers is a Summit County nonprofit organization dedicated to supporting the success of immigrants and their allies in Colorado. Following the exhibition's run at Old Masonic Hall, several of the portraits will travel to additional community venues in Summit County, including the Dillon Food Bank and, finally, Mountain Dreamers headquarters in Frisco.

Special thanks to Avery Glassman, Curator and Director of Programs and Special Projects, Breck Create Staff, Colorado Mountain Dreamers staff and portrait participants, Ken Nelson of Flame Group Foods and their kitchen team.



*IF*, 2022  
gouache on paper  
31-1/2" x 47-1/2" - paper size



*Sotheby's Collage II,  
study for painting, 2022  
magazine clippings  
11-½ x 17-½" - paper size*



*Sotheby's Collage I,  
study for painting, 2022  
magazine clippings  
5-¼ x 8-½" - paper size*



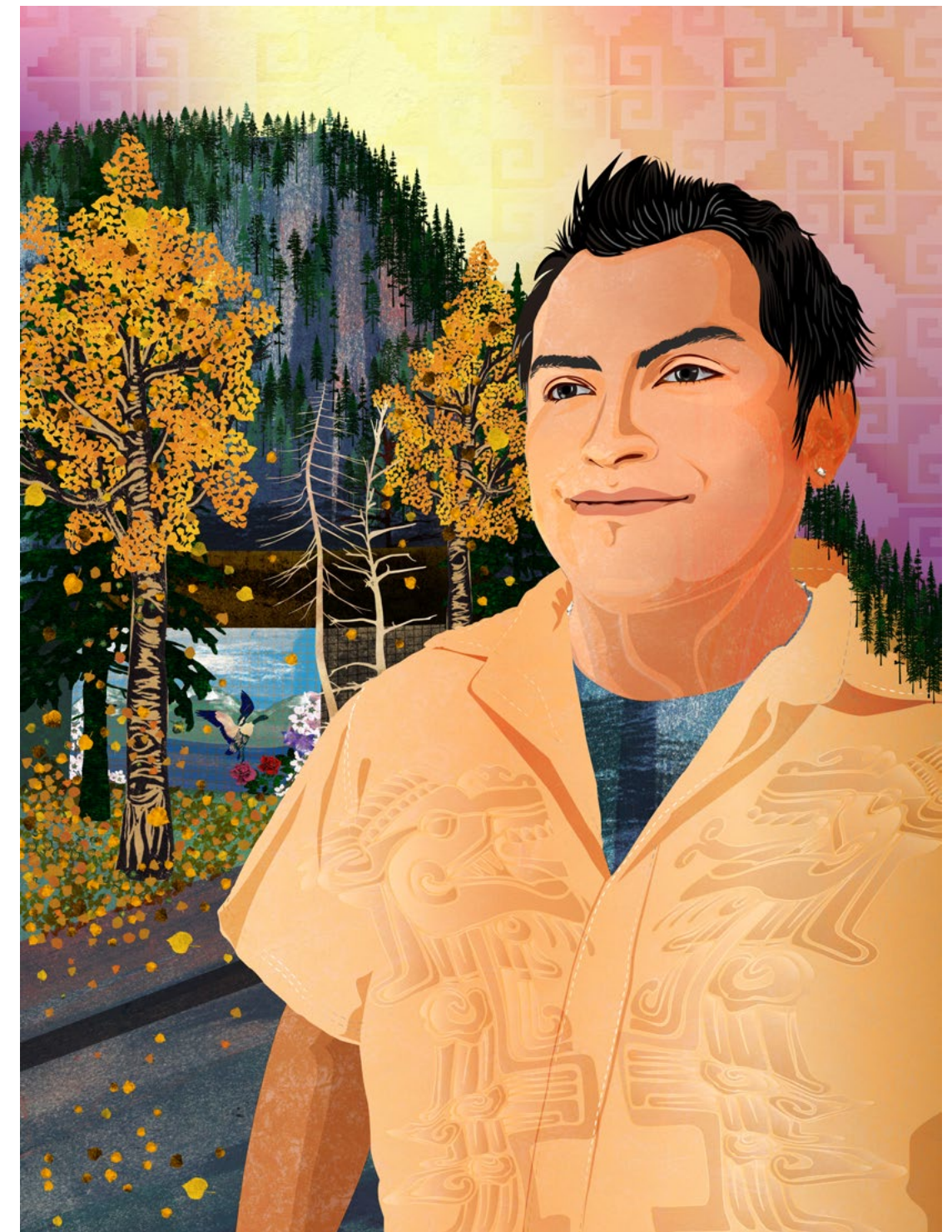
*Sotheby's Veri Peri Dream  
Interiors, 2022  
gouache on paper  
31-½" x 47-½" - paper size*



*Natalia and Rafael with  
Child, 2023*  
relief print collage and  
illustration, digital composite  
40 x 45" - paper size



*Veronica, 2023*  
relief print collage and  
illustration, digital composite  
40 x 30" - paper size



*Carlos, 2023*  
relief print collage and  
illustration, digital composite  
40 x 30" - paper size



*Untitled (weavings), 2023*  
magazine clippings, paint  
chips, recycled paint palette,  
montotype  
14 x 11" - paper size



*Fernando, 2023*  
gouache on paper  
47- $\frac{1}{2}$  x 31- $\frac{1}{2}$ " - paper size



*Untitled (weavings II)*, 2023  
monotype, relief prints, paint  
chips, spray paint  
20 x 14" - paper size



*Joyce*, 2023  
relief print collage and  
illustration, digital composite  
40 x 30" - paper size





*Untitled (landscape), 2023*  
monotype, relief prints,  
spray paint  
33 x 24" - paper size



*Javier, "Oso" (Bear), 2023*  
relief print collage and  
illustration, digital composite  
40 x 30" - paper size



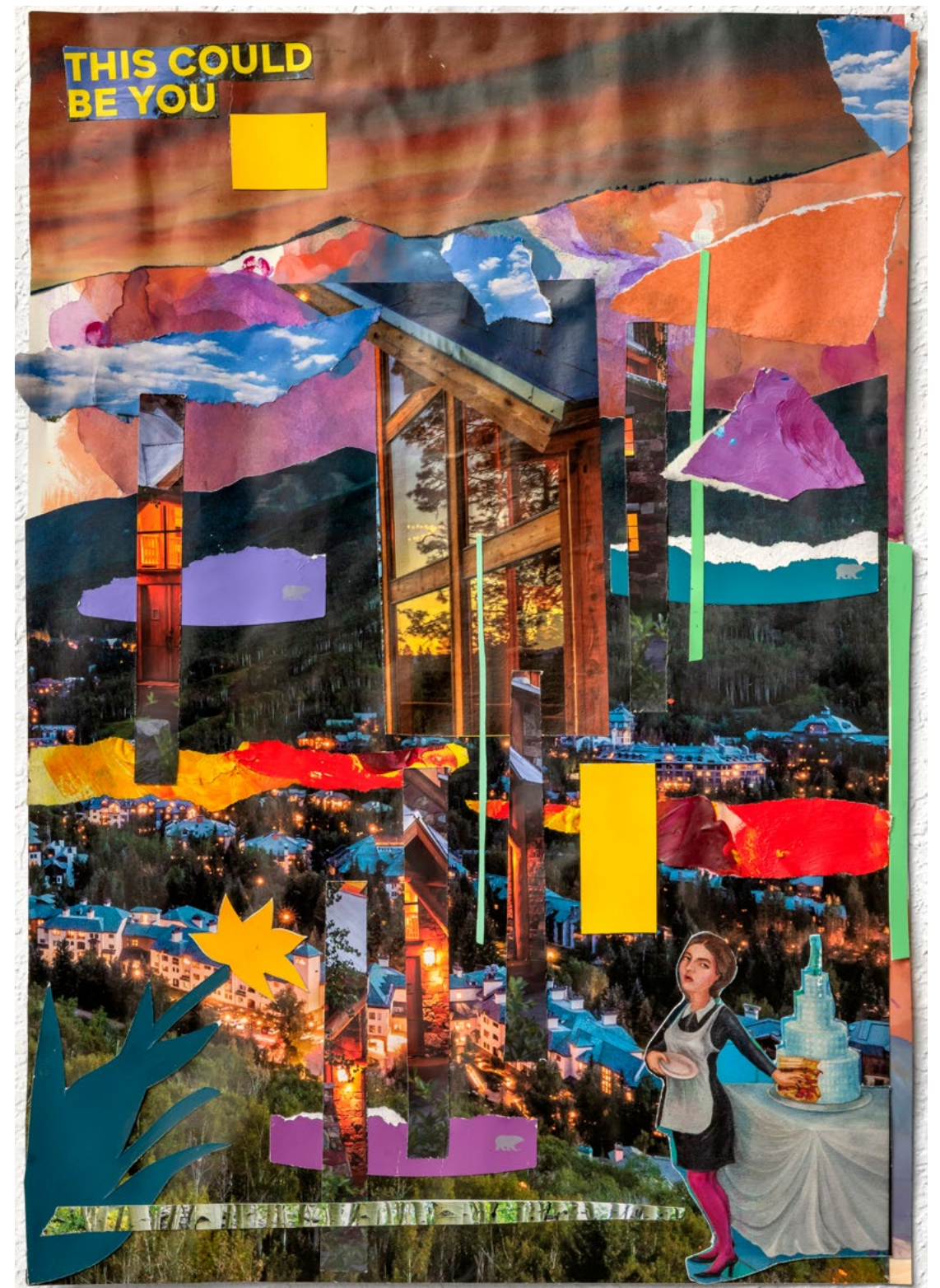
*Flourish (Wild Flowers)*, 2023  
relief prints collage  
49-½ x 35"



Flourish (Wild Flowers), detail



*Untitled (strips), 2023*  
magazine clippings, paint  
chips, recycled paint palette  
18 x 12" - paper size



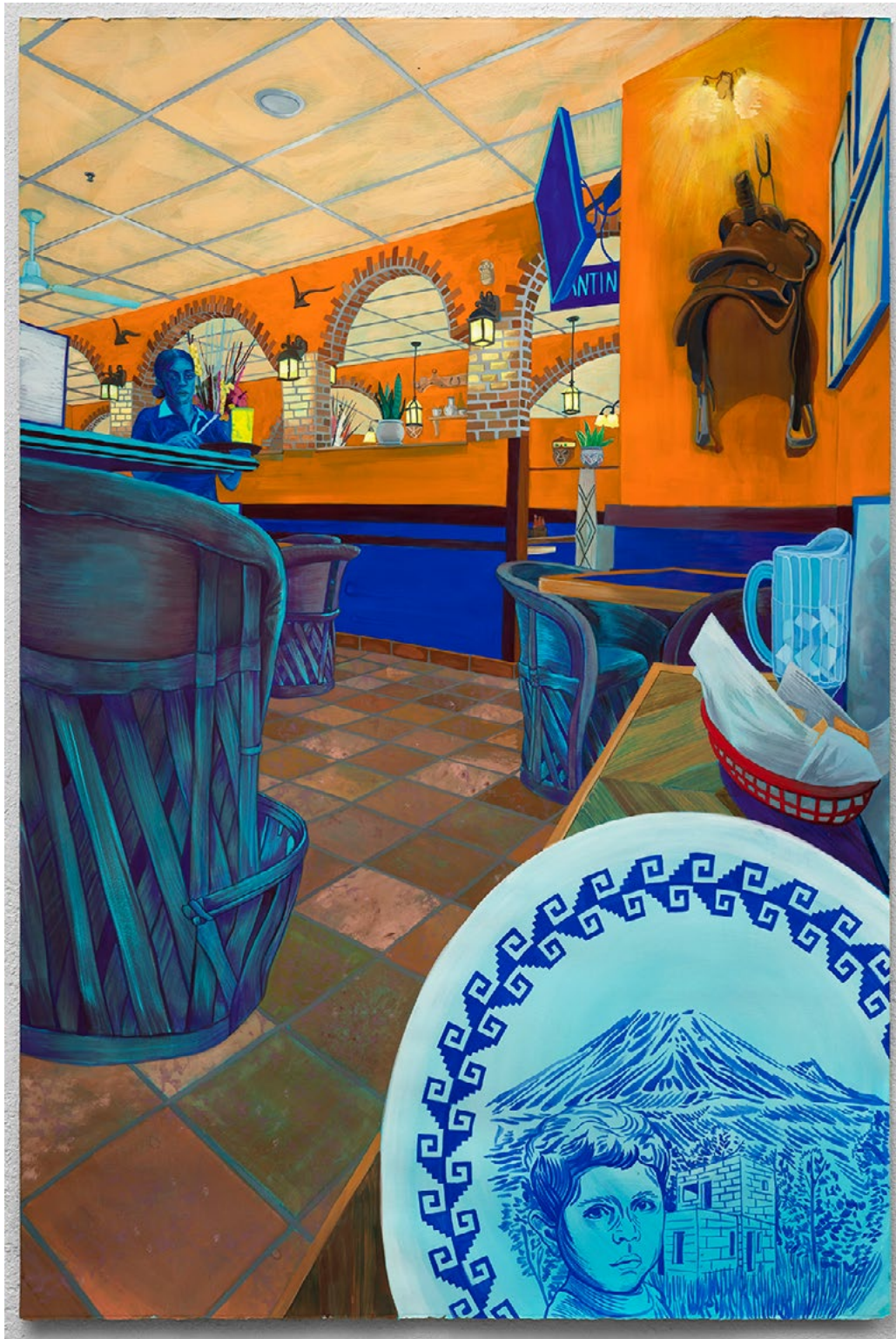
*Untitled (this could be you), 2023*  
magazine clippings, paint chips,  
recycled paint palette  
13 x 9" - paper size



Cook, 2023  
gouache on paper  
47- $\frac{1}{2}$  x 31- $\frac{1}{2}$ " - paper size



Gerardo, 2023  
gouache on paper  
47- $\frac{1}{2}$  x 31- $\frac{1}{2}$ " - paper size



*Hacienda Restaurant*, 2023  
gouache on paper  
47- $\frac{1}{2}$  x 31- $\frac{1}{2}$ " - paper size



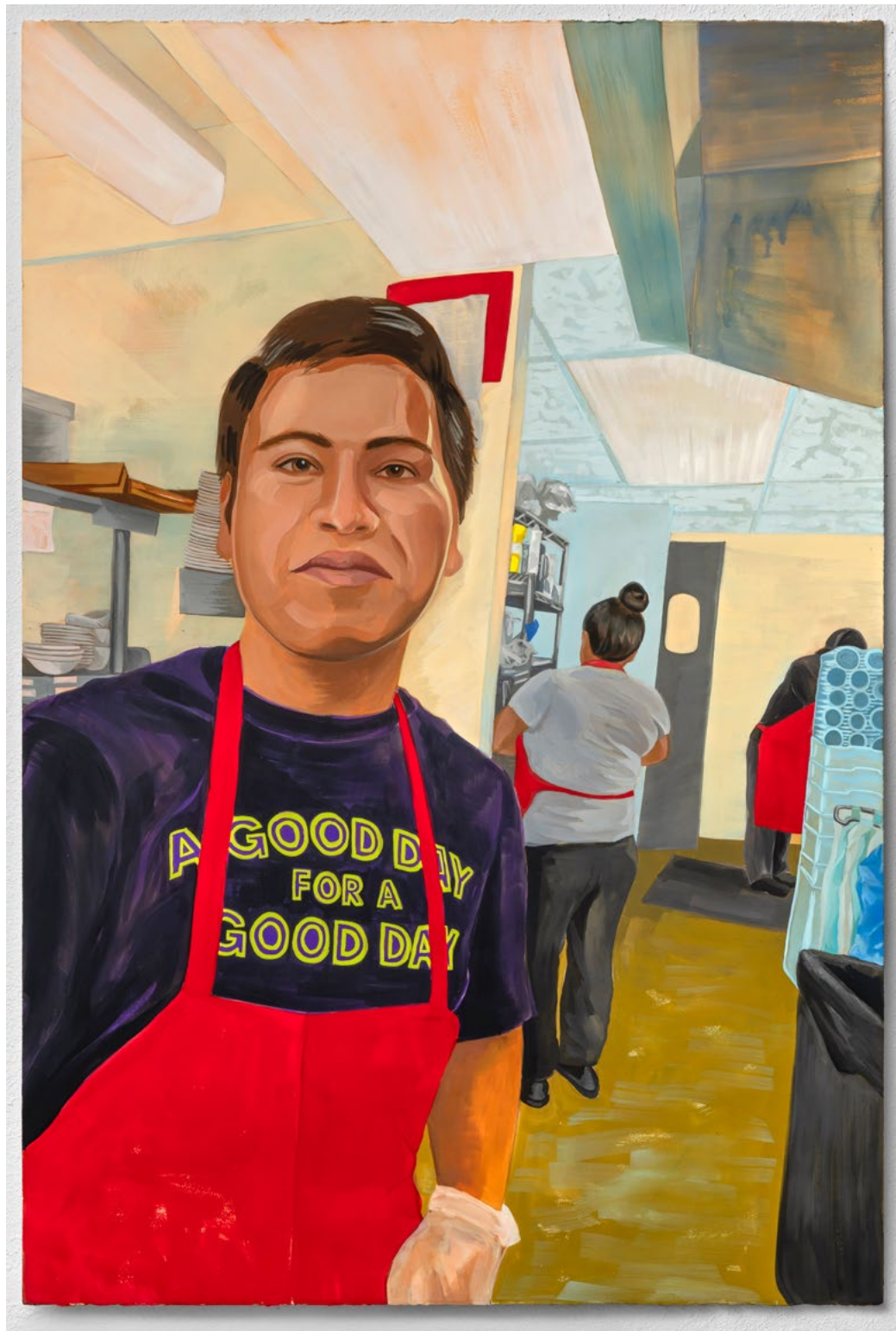
*Roman*, 2023  
gouache on paper  
47- $\frac{1}{2}$  x 31- $\frac{1}{2}$ " - paper size



*Kitchenscape, 2023*  
gouache on paper  
31-½ x 47-½ " - paper size



*Angie, 2023*  
gouache on paper  
47-½ x 31-½" - paper size



*Gregorio, 2023*  
gouache on paper  
47-1/2 x 31-1/2" - paper size



## About

Stephanie Mercado is an interdisciplinary artist and art administrator, born and raised in Boyle Heights, Los Angeles. Her artwork and artistic practice are centered on the workforce, manual labor, and empowerment. Her imagery is eclectic, inspired by lived experiences, cultural references, and the fusion of traditional printmaking with experimental practices.

Mercado's print-based collages are comprised of relief carvings printed on handmade colored papers. The labor-intensive work pays homage to the working hand, historical traditions of craft, and professions rooted in labor and labor of love.

Her portraits pay homage to workers and their contributions to society. Some of her images weave pop culture references or historical paintings to create new narratives that explore how images influence our cultural experiences and values in the current day. She incorporates organic elements to reference the natural world and the larger role we play as interconnected human beings. The floral bouquets are used as a metaphor for growth, flourishing, and flowering into being.

Contact: Stephanie Mercado  
Los Angeles | California  
[stephaniemercado.com](http://stephaniemercado.com)  
stephanie.x.mercado@gmail.com





[stephaniemercado.com](http://stephaniemercado.com)